

## SLO-MOTION COMPLIANCE

Introducing our 'Slo-motion Compliance' speed hump. Compliance is a modular speed control system consisting of independent modules each 250mm long with rounded end caps. Compliance is manufactured from a high tech 'Linear Low Density Polyethylene' (LLDPE) with solid colour. It will not fade, rot, rust or crack and has built-in prismatic reflectors for enhanced night visibility. Suitable for car parks, schools, shopping centres, factory complexes or anywhere it is desired to control the speed of vehicles.

### Finally an Australian company...

has designed and developed in Australia a modular composite speed hump to comply with Australian Standards AS2890.1:2004 for local conditions.

**Slo-motion Compliance is as tough as the Aussie Outback.**

04

# WARNING

© Barrier Group Pty. Ltd. takes the protection of its intellectual property (IP) seriously and will not hesitate to pursue legal action against any individual, group or organization attempting to steal, copy or duplicate any of its proprietary designs OR anyone who imports, sells or distributes illegal copies or duplicates of its proprietary designs.

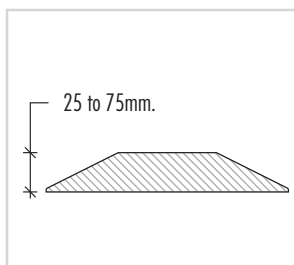
**IT'S AGAINST THE LAW – AVOID THE PAIN!**



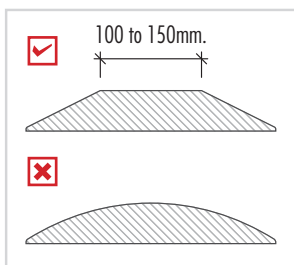
### PLEASE NOTE

The Australian Standard which regulates the design and use of speed humps for use in off-street parking in Australia is 'AS2890.1:2004 parking facilities'. AS2890.1 identifies four main criteria in the design of "type 2" speed humps: height, cross section, ramp angle and markings.

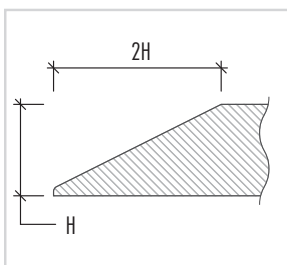
Don't be fooled! Until now very few "type 2" speed humps sold in Australia met these four criteria. Of the non-metal type, most if not all are manufactured overseas from cheap, very poor quality reclaimed materials of variable origin which quickly breakdown, fade or fail under Australian conditions.



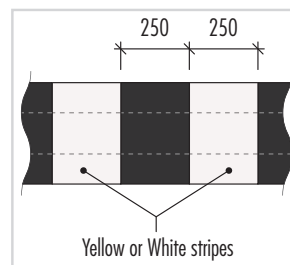
**Height:**  
Must be between 25 & 75mm.



**Cross Section:**  
Must be flat on top.  
Not round or peaked.



**Ramp Angle:**  
Must have a ramp angle 2:1.



**Markings:**  
Must have alternating parallel yellow or white stripes 250mm wide.

## SLO-MOTION COMPLIANCE

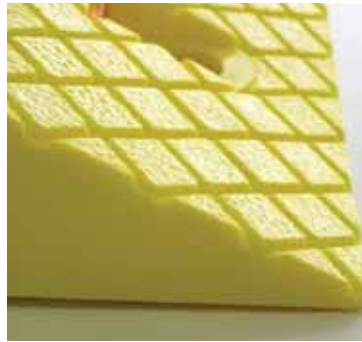
### Value features:

- » Designed and developed in Australia to comply with AS2890.1:2004.
- » Solid colour. U.V. stabilised, high tech composite plastic construction.
- » Supplied with fixings ready for installation.
- » Built-in prismatic reflectors for improved night visibility.
- » Slip resistant texture moulded into surface.
- » Built-in cable channel 27 x 30mm.
- » Strengthened mounting points with large diameter load sharing washers.
- » Low noise design suitable for residential areas.
- » Excellent outdoor weathering characteristics
- » Light weight with incredible strength, able to take vehicles, trucks and buses etc.

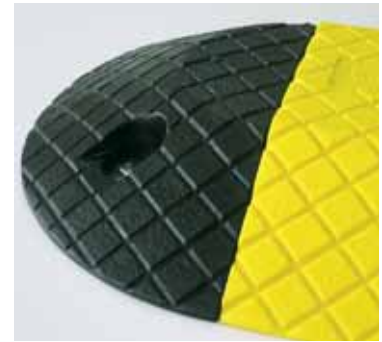
### Specifications:

<b>Description:</b>	Slo-motion Compliance speed control system.
<b>Material:</b>	Injection moulded Linear Low Density Polyethylene (LLDPE).
<b>Finish:</b>	Solid colour (Black or Yellow).
<b>Length:</b>	Body modules – 250mm. End modules – 180mm Radius.
<b>Width:</b>	360mm (In the driving direction).
<b>Height:</b>	60mm.
<b>Ramp Angle:</b>	2:1.
<b>Weight:</b>	Body modules – 1.8kg. End modules – 0.8kg.
<b>No. of fixings:</b>	2 per module (supplied).

PART No.	DESCRIPTION
SMC250Y	250mm body module – Yellow
SMC250B	250mm body module – Black
SMC250E	180mm radius end module – Black (pair)



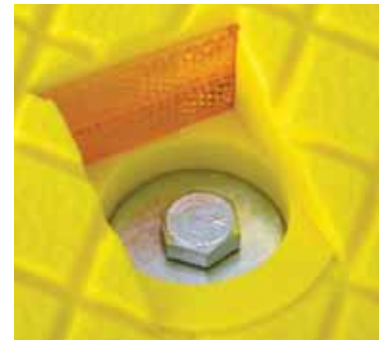
Textured slip resistant surface moulded in.



High tech composite plastics with solid colour.



Designed and developed in Australia for local conditions.



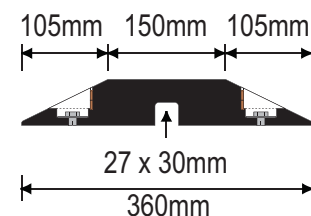
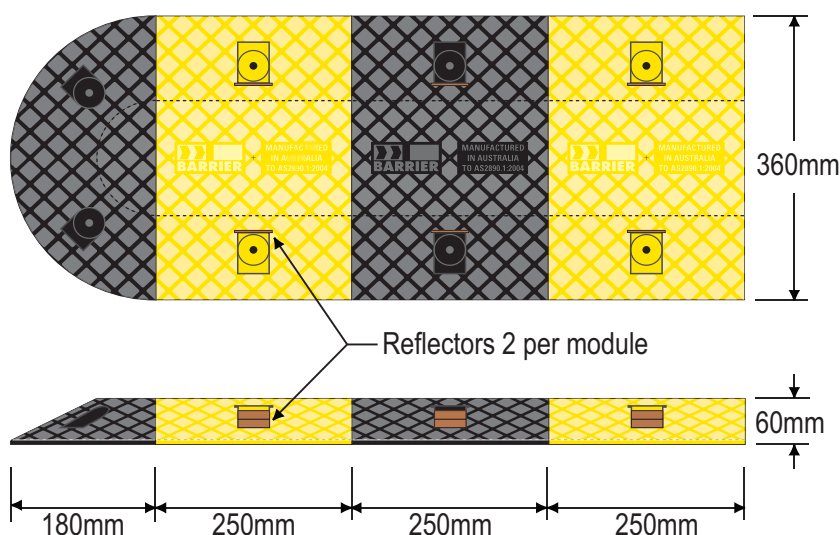
Built-in reflectors and large load sharing mounting points.



Light weight construction with strength and durability engineered in.



Simple installation with all fixings supplied.



# LEGEND



## AUSTRALIAN CONTENT

This product has been designed, developed and is either completely or substantially manufactured in Australia. (The minimum Australian content is between 50 and 100%).

---



## NEW AND UNIQUE

This is a new and unique product. It has either been designed, developed and manufactured by the Barrier Group Pty. Ltd. or it is being seen here for the first time.

---



## 100% RECYCLABLE

This product is manufactured from virgin grade raw materials and is 100% recyclable using existing, readily available recycling technology and services.

---



## RECYCLED MATERIALS

This product has been manufactured from either a combination of recycled materials and virgin grade materials or entirely from recycled materials.

---



## HOT DIP GALVANISED

This product has been hot dip galvanised prior to any surface coatings being applied. Hot dip galvanised offers vastly improved corrosion protection and extended life in harsh environments.

---



## FIXINGS INCLUDED

This product comes complete with all the necessary fixings to complete the standard installation. When comparing competitors prices against our own, always ensure they have included the fixings with the product (excludes gravel spikes).

---

## WARNING

© Barrier Group Pty. Ltd. takes the protection of its intellectual property (IP) seriously and will not hesitate to pursue legal action against any individual, group or organization attempting to steal, copy or duplicate any of its proprietary designs OR anyone who imports, sells or distributes illegal copies or duplicates of its proprietary designs.

**IT'S AGAINST THE LAW – AVOID THE PAIN!**