



'MENNI' – Asset Protection

'Menni' is a set of 4 modular components that can be plugged together in any combination to satisfy a wide range of end user applications.

These applications may include protecting physical assets by preventing vehicles from coming into contact with them. Alternatively, 'Menni' can be used where goods are stored near pedestrian zones to prevent encroachment by forklifts and other vehicles.

There are four modules in the 'Menni' system. The end module, the body module, the 'T' or intersection module and the 90 degree corner module.

All 'Menni' modules are manufactured from a high tech Linear Low Density Polyethylene (LLDPE) with solid colour. They will not fade, rot, rust or crack and they have built-in reflectors for enhanced night visibility.

Suitable for use anywhere your imagination takes you.

And finally, 'Menni' has been designed, developed and manufactured in Australia, referencing the relevant standards and using premium virgin grade materials suited to tough local conditions.

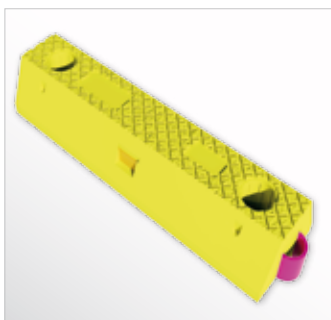
One product – 'Menni' solutions.



Value Features:

- » Designed, developed and manufactured in Australia.
- » Designed to comply with AS2890.1:2004 for wheelstops and AS1657:1992 for walkways.
- » Solid colour, UV stabilised, high tech composite plastic construction.
- » Supplied with fixings, blanking plugs and connectors ready for installation.
- » Built-in edge reflectors for improved visibility for approaching vehicles.
- » Optional top reflector plugs for improved pedestrian safety.
- » Slip resistant texture moulded into surface.
- » Excellent outdoor weathering characteristics
- » Light weight with incredible strength.
- » Modular design for ease of use and handling.

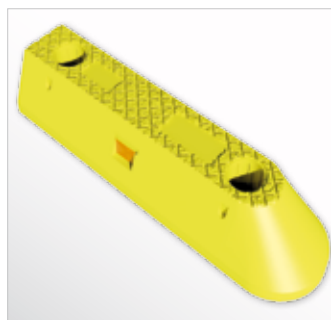
PART No.	DESCRIPTION
BME-Y	'Menni' end module – Yellow
BMB-Y	'Menni' body module – Yellow
BMT-Y	'Menni' T-intersection module – Yellow
BMC-Y	'Menni' 90 degree corner module – Yellow
BMR	Optional top reflector plugs



**'MENNI' BMB-Y
BODY MODULE**

Body modules are used to provide length. They can be used in any quantity and they may be combined with end, corner & 'T' modules.

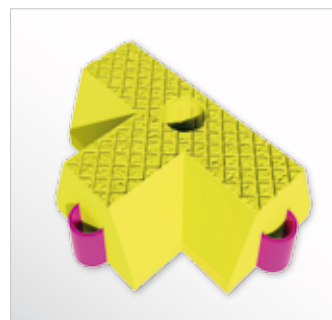
L540 x W150 x H100mm.



**'MENNI' BME-Y
END MODULE**

End modules provide a start and end point for any installation. The rounded and sloping end reduces tripping hazards or the risk of tyre damage to vehicles.

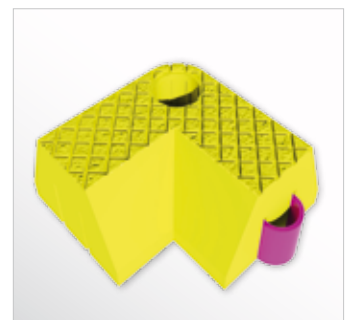
L540 x W150 x H100mm.



**'MENNI' BMT-Y
T-INTERSECTION MODULE**

T-intersection modules allow intersecting lines of modules to connect to each other. Particularly useful in pedestrian fencing or trolley bay applications.

L(a)300 x L(b)225 x W150 x H100mm.



**'MENNI' BMC-Y
90 DEGREE CORNER MODULE**

Corner modules allow for left or right changes in direction of 90 degrees. Can be used with all other modules.

L(a)225 x L(b)225 x W150 x H100mm.

'MENNI'**Installation Procedure:**

1. Using a chalk line, set out and position 'Menni' modules and connect together with connector plugs supplied. With a 10mm drill bit and impact drill, pilot drill the mounting holes for each module. (PHOTO'S 1 & 2).
2. Move the modules to one side and drill piloted holes with a 14mm drill bit 100mm deep. (Note: If using concrete screw bolts instead of plastic plugs and coach screws drill size is only 10mm). Clean dust from holes, insert plastic Hilti plugs and hammer flush with floor. (PHOTO'S 3 & 4).
3. Reposition 'Menni' modules over holes and insert fixings making sure to use the large diameter washers supplied. (PHOTO 5).
4. Using an appropriate size socket wrench or impact driver tighten fixings. (PHOTO 6).
5. Fit blanking plugs supplied into fixing sockets and clean the site to complete your installation. Note: *Optional reflector plugs are available if required for improved night time visibility.* (PHOTO 7).
6. Go over completed installation and tighten all connections.

INSTALLATION NOTES:

- The moulded plastic caps supplied double as hole plugs and module connectors.
- To achieve long, straight lines use a string or chalk line.
- On completion check all fixings are tight.

**WHAT YOU WILL NEED**

- Tape measure and string line.
- Impact drill and masonry bits.
- Socket wrench or impact driver.
- Hammer.



1.



2.



3.



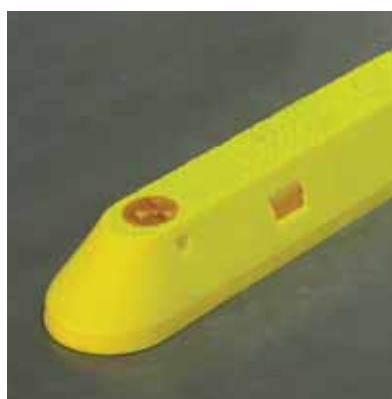
4.



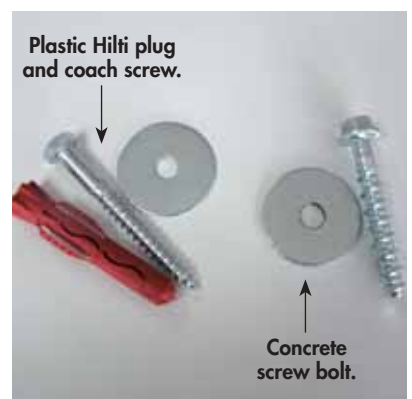
5.



6.



7.



The two types of fixings available.