

## ROUND BOLLARDS Stainless Steel

**316**  
Marine grade  
polished  
stainless  
steel

Our round stainless steel bollards are offered in three designs: below ground for installation into a concrete footing, core drilled for installation into a core drilled hole using epoxy adhesive, or surface mount for bolted installations.

Manufactured from marine grade 316 stainless steel these bollards are all finished with No. 4 mechanical finish. 316 grade is recommended for installation near coastal areas to minimise the risk of tea staining and to ensure the bollards maintain a high quality appearance over many years.

Our stainless steel bollards have a machined flat cap. This helps present a high quality appearance required for architectural environments.

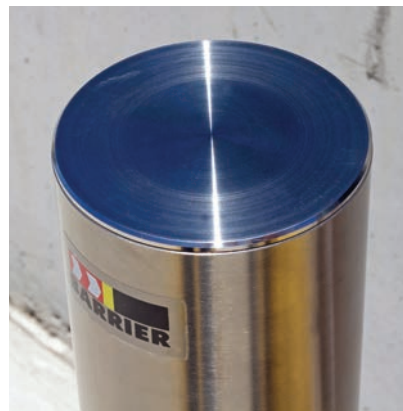
For the ultimate high quality presentation, polished stainless steel skirts are available as an option to cover the base plates and fixings.

### Features:

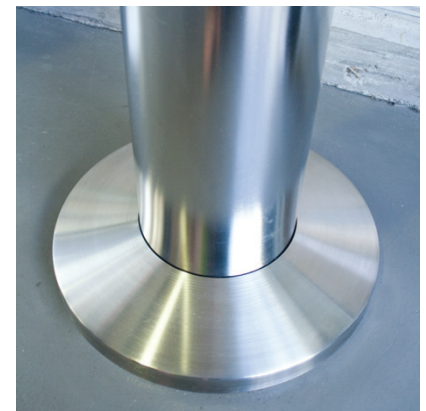
- 316 grade polished stainless steel.
- Machined flat cap.
- Available in surface mount, new concrete or core drilled models.
- 90 or 140mm diameter.
- Optional cover skirts available.



Ideal for high-end architectural applications.



Machined flat cap.



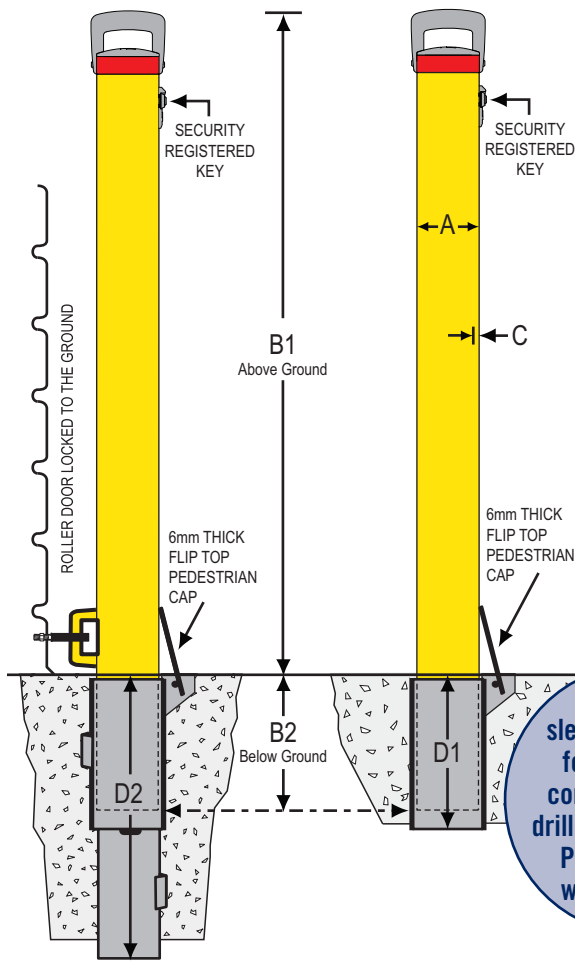
Optional base cover.

### BELOW GROUND (BG), SURFACE MOUNT (SM) & CORE DRILLED (CD)

PART No.	A (mm)	B (mm)	C (mm)	D (mm)	E (mm)	F (mm)	Stainless Grade	Weight (kg)
C90BG-SS	900	300	90	3.05	–	–	316	8kgs
C90CD-SS	900	200	90	3.05	–	–	316	7.4kgs
C90SM-SS	900	–	90	3.05	6	225	316	7.4kgs
COV90-SS	Optional 90mm base cover – stainless steel				–	–	–	0.3kgs
C140BG-SS	1200	500	140	3.4	–	–	316	25kgs
C140CD-SS	1200	200	140	3.4	–	–	316	22kgs
C140SM-SS	1200	–	140	3.4	10	300	316	19kgs
COV140-SS	Optional 140mm base cover – stainless steel				–	–	–	0.5kg

**ROLLER DOOR**

**FREE STANDING**



**In-ground sleeves available for either new concrete or core drilled installations. Please specify when ordering**

**CAM-LOK REMOVABLE BOLLARDS**  
Below Ground

**Features:**

- Designed to help combat 'Ram-Raids'.
- Cam-Lok removable bollards come in two styles. Freestanding and roller door models for the protection of factory roller shutter doors.
- Highest quality 'Bi-lock' removable core lock mechanisms with security registered keying.
- Cast aluminium caps and handles finished in a silver grey metallic powder coat.
- **All steel bollards (including those with powder coated finishes) are hot dipped galvanised during manufacture.**
- **Stainless steel models are made from marine grade 316 stainless steel with a polished finish.**
- Choice of in-ground sleeves.



Stainless steel models achieve a sophisticated finish.



Cast aluminium caps with handles.



Top quality 'Bi-lock' security locks.



Heavy duty brackets for roller door model.



Sleeves with built-in pedestrian cap.

POST PART No.	POST Description	POST Finish	A (mm)	B1 (mm)	B2 (mm)	C (mm)	POST (kgs)	CORED SLEEVE Part No.	D1 (mm)	CONCRETE SLEEVE Part No.	D2 (mm)
BCL90	90mm freestanding post	Galvanised & Powder coated	90	950	200	5	12.3	BCL90S-CD	225	BCL90S-NC	425
BCL90-G	90mm freestanding post	Galvanised only	90	950	200	5	12.3	BCL90S-CD	225	BCL90S-NC	425
BCL90-SS	90mm freestanding post	316 stainless steel	90	950	200	3.05	9.0	BCL90SS-CD	225	BCL90SS-NC	425
BCL90RD	90mm roller door post with brackets	Galvanised & Powder coated	90	950	200	5	12.5	BCL90S-CD	225	BCL90S-NC	425
BCL90RD-G	90mm roller door post with brackets	Galvanised only	90	950	200	5	12.5	BCL90S-CD	225	BCL90S-NC	425
BCL140	140mm freestanding post	Galvanised & Powder coated	140	1050	200	5	21	BCL140S-CD	225	BCL140S-NC	425
BCL140-G	140mm freestanding post	Galvanised only	140	1050	200	5	21	BCL140S-CD	225	BCL140S-NC	425
BCL140-SS	140mm freestanding post	316 stainless steel	140	1050	200	3.4	17	BCL140SS-CD	225	BCL140SS-NC	425
PART No. Accessories			PART No.		Accessories						
BCL90H	Cam-Lok 90mm surface mount storage unit		BHH		Wall mount bollard storage unit						
BCL140H	Cam-Lok 140mm surface mount storage unit		BCLKEY		Cam-Lok additional registered key						



## TEE-LOK REMOVABLE BOLLARDS

### Surface Mount

#### Features:

- Strong 90mm post with 5mm thick wall.
- Heavy steel receiver shoe is also used a storage unit for bollards.
- Requires only 4 off 12mm holes, 65mm deep.
- No core drilling or slab.
- Internal locking system with unique **Tee-Lok** 'T' handle keys.
- Fixings for receiver shoe are inaccessible when post is locked in place.
- Optional colours available on request.

**Tee-Lok System**

**Material:** Steel post 90mm diameter, 5mm wall.

**Finish:** Hot dipped galvanised prior to Safety Yellow powder coat.

**Height:** 950mm post height. Receiver shoe only 20mm high with post removed.

**Weight:** Post – 11.9kgs. Receiver shoe – 2.9kgs.

**Installation:** 4 off 12 x 65mm sleeve anchors.

**Note:** Bollard and receiver shoe sold separately.

PART No.	DESCRIPTION
SMTL	Tee-Lok surface mount bollard – Powder coated
SMCLH	Receiver shoes for Cam-Lok / Tee-lok – Powder coated
BRKEY	Additional 'T'-handle key for Tee-lok



## CAM-LOK REMOVABLE BOLLARDS

### Surface Mount

#### Features:

- Galvanised and powder coated or 316 stainless steel.
- Heavy steel receiver shoe is also used a storage unit for bollards.
- Requires only 4 off 12mm holes, 65mm deep.
- No core drilling or slab penetration.
- Internal locking system with high security **Cam-Loks** with registered keys.
- Fixings for receiver shoe are inaccessible when post is locked in place.
- **Stainless model has a flat cap and no handle.**

**Cam-Lok System**

**Material:** Post – 90mm diameter x 5mm wall steel or 3.05mm wall stainless steel.

**Finish:** Galvanised and powder coated or 316 stainless steel.

**Height:** 950mm post height. Receiver shoe only 20mm high with post removed.

**Weight:** Post – 11.9kgs. Receiver shoe – 2.9kgs.

**Installation:** 4 off 12 x 65mm sleeve anchors.

**Note:** Bollard and receiver shoe sold separately.

PART No.	DESCRIPTION
SMCL	Cam-Lok surface mount bollard – Powder coated
SMCLH	Receiver shoes for Cam-Lok / Tee-lok – Powder coated
SMCL-SS	Cam-Lok surface mount bollard – 316 Stainless steel
SMCLH-SS	Receiver shoes for Cam-Lok – Stainless steel
BCLKEY	Additional Cam-Lok registered key

**316**  
Marine grade stainless steel also available



## RETRACTABLE BOLLARDS

### Features:

- Locks in both up and down positions.
- Strong circular design 90mm diameter in mild steel or stainless steel.
- Black anti-slip surface on top of bollard.
- Unique low cost 'T' handle key.
- Convenient, no loose posts to store.
- Galvanised in ground casing.
- Available hot dipped galvanised with a powder coated finish or 316 grade stainless steel bollards.
- Trouble free design. Only two moving parts.
- Internal locking system can't be tampered with or fouled by dirt or water. **Note: Two keys supplied per order. Additional keys may be purchased.**



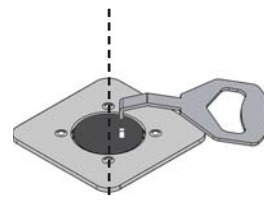
- Material:** Bollards 90mm diameter with 5mm mild steel or 3.05mm 316 stainless steel wall. In ground casing 140mm with 5mm wall mild steel.
- Finish:** Hot dipped galvanised with powder coated finish or marine grade 316 stainless steel. In-ground casings for all models are hot dipped galvanised.
- Height:** Above ground 900mm. Below ground 1150mm.
- Weight:** BR900 41.5kgs, Operating 6kgs. BR900-SS 38kgs, Operating 4kgs.
- Locking:** Unique internal locking mechanism with 'T' handle key.
- Installation:** Excavation and concrete footing.

PART No.	DESCRIPTION
BR900	Retractable bollard assembly – galvanised & powder coated
BR900R	Replacement bollard
BR900-SS	Retractable bollard assembly – 316 stainless steel
BR900R-SS	Replacement 316 stainless steel bollard
BRKEY	Additional 'T' handle key for retractable bollard

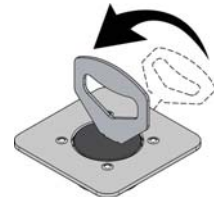
Phone us or visit our website for more information!

## Locking Procedure

### RETRACTABLE BOLLARDS



1. Insert key to short side.



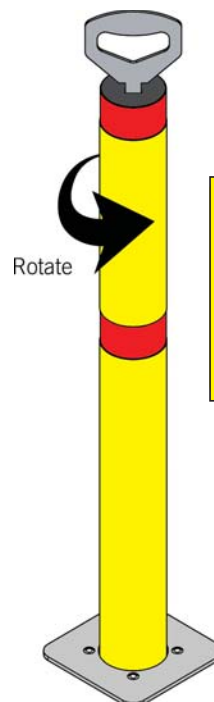
2. Fully insert and pivot key to upright position.



3. Rotate to unlock then lift.



4. Lift until fully extended.



5. Rotate to lock.



6. Confirm bollard is locked.

Mounting kits sold separately  
**77**



## THE ZEPHYR

“A soft and gentle breeze”

In a busy city ‘Zephyr’ is a stunning short or long term bicycle storage solution. Incorporate it into a cutting edge architectural design and it becomes a sculptured bollard, a classic design element. In the town square or park it’s a gathering point, a place to stop, to chat, to bide a while with friends. Or then again, is it simply a beautiful piece of public sculpture, one that invites you to run your hands over its sumptuous metallic form, its smooth and generous curves?

### Features:

- Stunning one-piece 18kg aluminium casting.
- Complies with AS2890.3-1993 for class 3 bicycle security.
- Multi-functional design.
- Available in polished or powder coated finishes.
- Options for fixed or removable installations.
- Designed and manufactured in Australia.
- Full factory installation service available.
- 100% recyclable at end of life.

**Material:** Cast AA6061 grade aluminium from Tasmania.

**Size:** 845mm high x 224mm wide x 394mm deep.

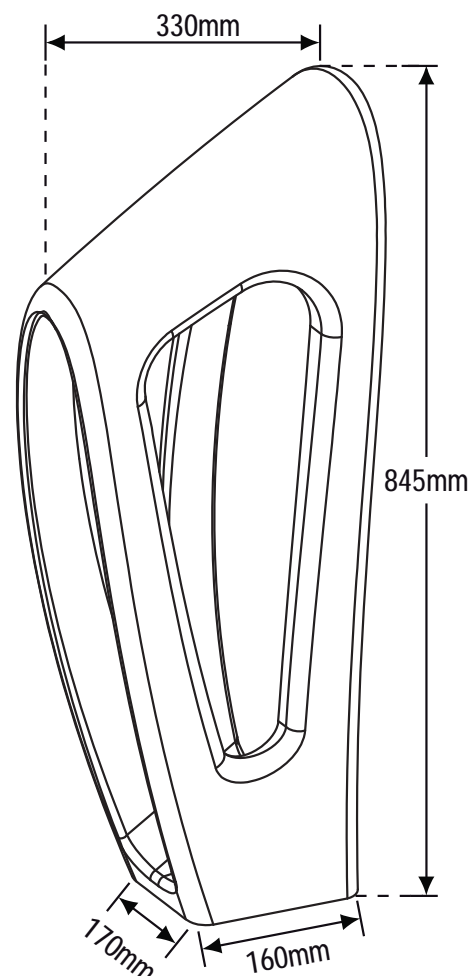
**Weight:** 18kgs body only (not including mounting).

**Finishes:** – High polish alloy finish.  
– Stainless steel look thermoplastic powder coat.  
– Custom colour powder coat.

**Fixing:** Choice of 4 mounting systems (sold separately).

PART No.	DESCRIPTION
BZ-POL	Zephyr body – Polished alloy finish
BZ-TPP	Zephyr body – Stainless look thermoplastic powder coat
BZ-CUS	Zephyr body – Custom powder coat

**100% Australian designed and manufactured from Australian aluminium!**





### REMOVABLE ZEPHYR

Zephyr stem with fixings, locking tool and in-ground sleeve. The Zephyr stem locks into the in-ground sleeve but can be removed for occasional vehicle access or servicing operations. Kits are available for either core drilled or new concrete installations. Both stem and sleeve are hot dipped galvanised.

Zephyr body sold separately

PART No.	DESCRIPTION
BZR-CD	Stem kit for removable Zephyr with core drilled sleeve
BZR-NC	Stem kit for removable Zephyr with new concrete sleeve



### SURFACE MOUNT ZEPHYR

The Surface Mount Zephyr is designed for mounting where the surface cannot be penetrated such as timber decking or sensitive tiled areas. The base plate is a 298mm diameter x 8mm thick polished 304 stainless steel disc predrilled with 11mm mounting holes and fixings to attach it to the Zephyr body. (**Note:** ground fixings are not included).

Zephyr body sold separately

PART No.	DESCRIPTION
BZF-SM	Base plate kit for fixed Zephyr with surface mounting

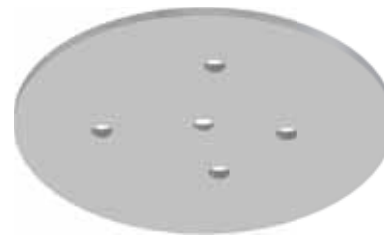


### STUD ANCHORED ZEPHYR

Zephyr stud anchoring system is designed for use where the Zephyr is to be permanently installed in stone, tiled or concrete surfaces. The installation kit (KIT 20) comes with four M12 x 120mm stainless steel threaded studs and a polypropylene drilling template which doubles as a surface gasket. The studs are simply epoxied into the drilled holes. (See also optional Dress Circle).

Zephyr body sold separately

PART No.	DESCRIPTION
KIT20	Anchoring kit



### DRESS CIRCLE

The optional Dress Circle is available for use where Stud Anchored Zephyr and Surface Mount Zephyr are mixed together in the same installation and you wish to maintain a consistent look. The Dress Circle is a polished 298mm diameter x 8mm thick polished 304 stainless steel disc. It simply fits over the anchor studs prior to epoxying into the ground.

Zephyr body sold separately

PART No.	DESCRIPTION
BZ300DC-SS	Dress circle (optional)