



BALL-FENCE Hand Rail System

Features:

- Modular handrail system that includes stanchions in a range of configurations.
- Components are assembled on site or can be partially assembled in our factory and delivered to site in sections for simple fixing. (Charges apply).
- Components are all hot dip galvanised.
- Complies to AS 1657:2013.
- Suitable for indoor and outdoor use.
- Self closing gates available.

Material: Post 48.3mm O.D. (40mm N.B.)
Handrail 42.4mm O.D. (32 N.B.)
Kneerail 33.7mm O.D. (25 N.B.)

Finish: Hot dip galvanised.

Height: 1017mm ground to handrail centre.
560mm ground to kneerail centre.

Spacing: Max post spacing 2 metres
centre to centre.



Menni Asset Protection for Ball-Fence on page 101.



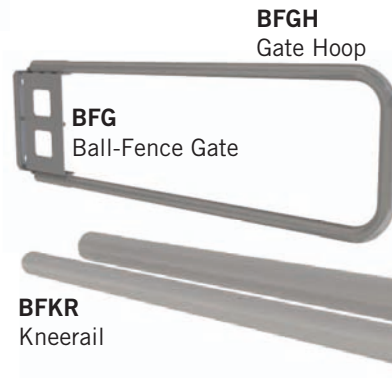
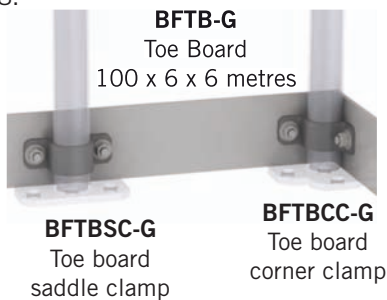
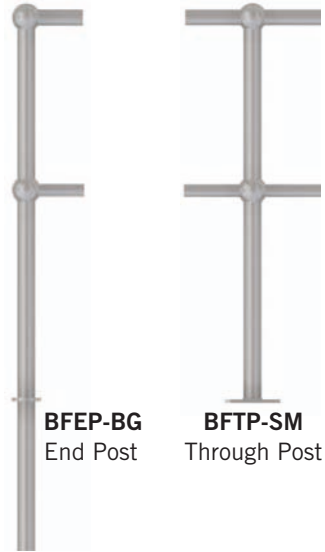
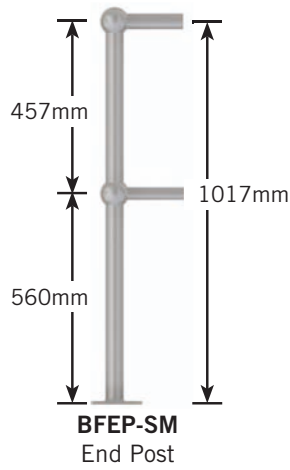
W-Beam Guard Fence for Ball-Fence on page 18-21.



This is an example of the type of corrosion that occurs when you don't use galvanised materials in extreme environments.



Ball-Fence Gates on page 24.



PART No.	DESCRIPTION
BFHR	Hand rail 32 N.B. x 6 metres
BFKR	Knee rail 25 N.B. x 6 metres
BFEP-SM	End post (surface mount)
BFEP-BG	End post (below ground)
BFTP-SM	Through post (surface mount)
BFTP-BG	Through post (below ground)
BFCP-SM	Corner post (surface mount)
BFCP-BG	Corner post (below ground)
BFG	Ball-Fence gate (complete with 1.5 metre hoop) – Galvanised
BFG-P	Ball-Fence gate (complete with 1.5 metre hoop) – Powder coated
BFGPWB-SM	Ball-Fence gate post – Galvanised
C90SM-G	90mm surface mount bollard – Galvanised

PART No.	DESCRIPTION
BFB32	Bend 90° x 32 N.B.
BFB25	Bend 90° x 25 N.B.
BFCB	Closure bend
BFGH	Additional 1.5 metre gate hoop
BFSJ32	Slip joint 32 N.B.
BFSJ25	Slip joint 25 N.B.
BFTP-AF	Through post adjustable foot
BFCP-AF	Corner post adjustable foot
BFTP	Taper pin
BFTB-G	Ball-Fence toe board 100 x 6 x 6 metres – Galvanised
BFTBSC-G	Toe board saddle clamp – Galvanised
BFTBCC-G	Toe board corner clamp – Galvanised



MENNI Asset Protection

Menni is a set of four modular components that can be plugged together in any combination to satisfy a wide range of end user applications. These applications may include protecting physical assets by preventing vehicles from coming into contact with them. Alternatively, Menni can be used where goods are stored near pedestrian zones to prevent encroachment by forklifts and other vehicles.

There are four modules in the Menni system – the end module, body module, T-intersection module and 90 degree corner module.

Features:

- Designed to comply with AS/NZS 2890.1:2004 for wheel stops and AS 1657:2013 for walkways.
- U.V. stabilised solid colour.
- High tech composite plastic construction.
- Supplied with fixings, blanking plugs and connectors ready for installation.
- Built-in edge reflectors for improved visibility for approaching vehicles.
- Optional top reflector plugs for improved pedestrian safety.
- Slip resistant texture moulded into surface.
- Excellent outdoor weathering characteristics.
- Lightweight with incredible strength.
- Modular design for ease of use and handling.

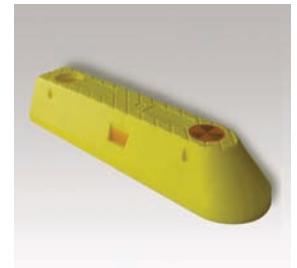
PART No.	DESCRIPTION
BME-Y	Menni end module – Yellow
BMB-Y	Menni body module – Yellow
BMT-Y	Menni T-intersection module – Yellow
BMC-Y	Menni 90 degree corner module – Yellow
BMR	Optional top reflector plugs



MENNI BMB-Y Body module

Body modules are used to provide length. They can be used in any quantity and they may be combined with end, corner and 'T' modules.

L550 x W150 x H100mm.



MENNI BME-Y End module

End modules provide a start and end point for any installation. The rounded and sloping end reduces tripping hazards or the risk of tyre damage to vehicles.

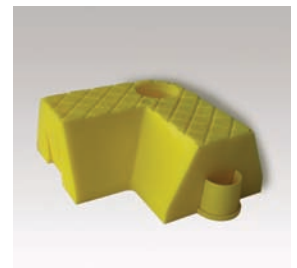
L550 x W150 x H100mm.



MENNI BMT-Y T-Intersection Module

T-intersection modules allow intersecting lines of modules to connect to each other. Particularly useful in pedestrian fencing or trolley bay applications.

L(a)300 x L(b)225 x W150 x H100mm.



MENNI BMC-Y 90° corner module

Corner modules allow for left or right changes in direction of 90 degrees. Can be used with all other modules.

L(a)225 x L(b)225 x W150 x H100mm.