



MENNI Asset Protection

Menni is a set of four modular components that can be plugged together in any combination to satisfy a wide range of end user applications.

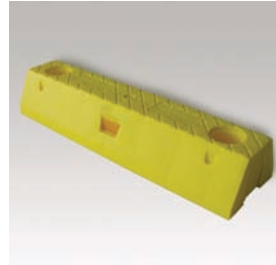
These applications may include protecting physical assets by preventing vehicles from coming into contact with them. Alternatively, Menni can be used where goods are stored near pedestrian zones to prevent encroachment by forklifts and other vehicles.

There are four modules in the Menni system – the end module, body module, T-intersection module and 90 degree corner module.

Features:

- Designed to comply with AS/NZS 2890.1:2004 for wheel stops and AS 1657:2013 for walkways.
- U.V. stabilised solid colour.
- High tech composite plastic construction.
- Supplied with fixings, blanking plugs and connectors ready for installation.
- Built-in edge reflectors for improved visibility for approaching vehicles.
- Optional top reflector plugs for improved pedestrian safety.
- Slip resistant texture moulded into surface.
- Excellent outdoor weathering characteristics.
- Lightweight with incredible strength.
- Modular design for ease of use and handling.

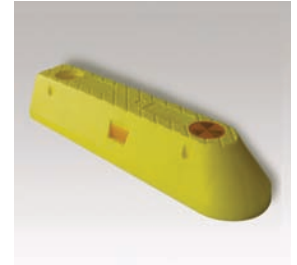
PART No.	DESCRIPTION
BME-Y	Menni end module – Yellow
BMB-Y	Menni body module – Yellow
BMT-Y	Menni T-intersection module – Yellow
BMC-Y	Menni 90 degree corner module – Yellow
BMR	Optional top reflector plugs



MENNI BMB-Y
Body module

Body modules are used to provide length. They can be used in any quantity and they may be combined with end, corner and 'T' modules.

L550 x W150 x H100mm.



MENNI BME-Y
End module

End modules provide a start and end point for any installation. The rounded and sloping end reduces tripping hazards or the risk of tyre damage to vehicles.

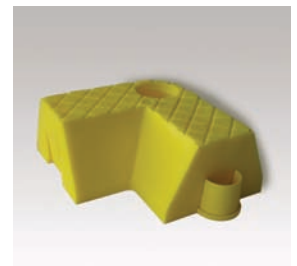
L550 x W150 x H100mm.



MENNI BMT-Y
T-Intersection Module

T-intersection modules allow intersecting lines of modules to connect to each other. Particularly useful in pedestrian fencing or trolley bay applications.

L(a)300 x L(b)225 x W150 x H100mm.



MENNI BMC-Y
90° corner module

Corner modules allow for left or right changes in direction of 90 degrees. Can be used with all other modules.

L(a)225 x L(b)225 x W150 x H100mm.