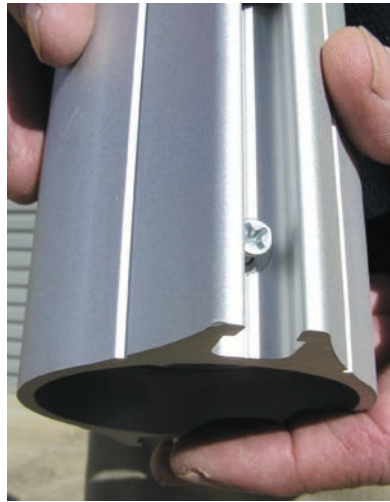


CONE MOUNT RECEIVER

Fitting instructions:

1. Inspect the lower securing screws to see that they are not following the internal profile of receiver. If so, undo the screw until internal profile is free of protrusions. (PHOTO 1).
2. Press receiver over the end of cone.
*Note: This will be a tight fit and will require some force to seat it in place. However, **do not** use a hammer to knock into position.* (PHOTO 2).
3. Once seated, tighten the screws to secure receiver to the cone. (PHOTO 3).
4. Insert belt clip into slot and slide lid across to 'lock'. (PHOTO 4-6).



1. Inspect.



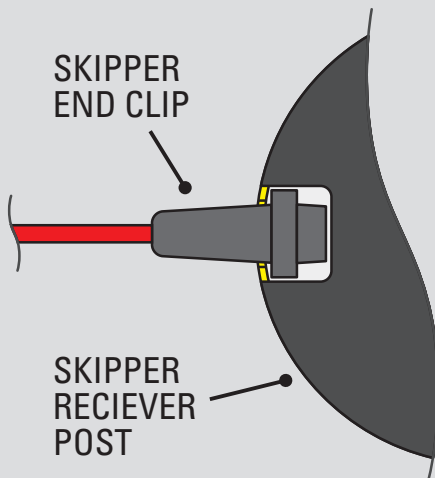
2. Apply.



3. Tighten.



4. Insert



5. Lock.



6. Complete.